

N.E. 1/4, OF SECTION 18, T.6N., R.1W., S.L.B. & M.

IN OGDEN CITY
SCALE 1" = 200'

NOTE: P. 95 OMITTED

TAXING UNIT: 25, 359

SEE BOOK 11 PAGE 25

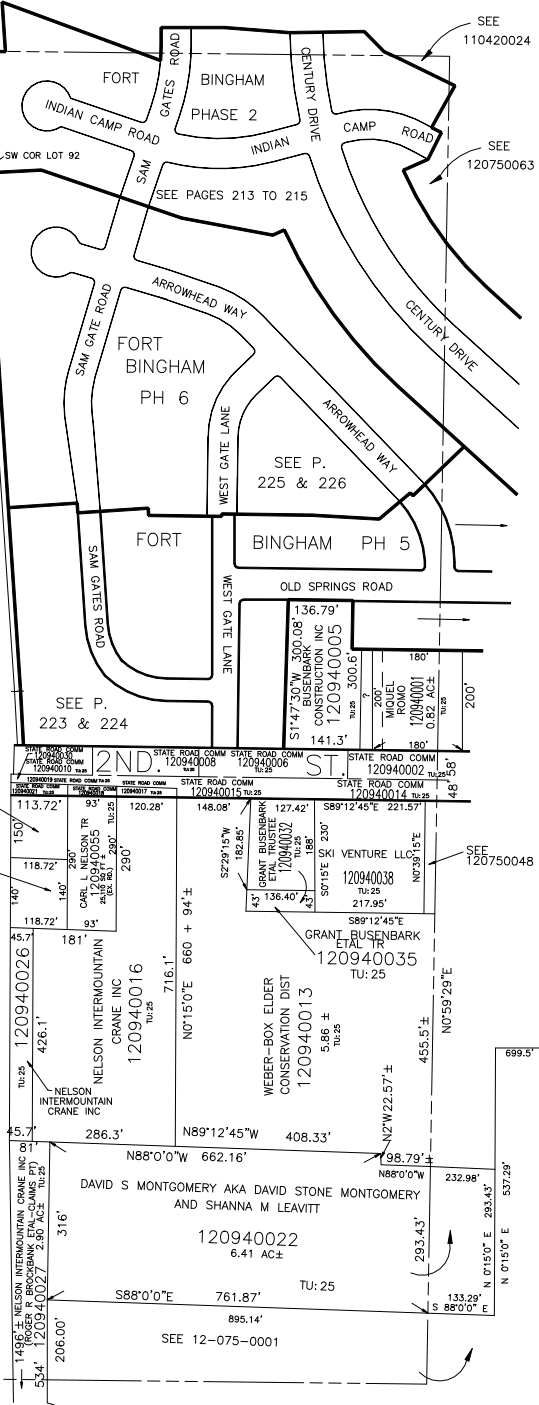
OGDEN CITY CORP
(120940058)
13,782 SQ FT
TU: 25

SEE P. 94

DDO ECONOMIC DEV. PROJECT AREA
N3°51'15"W DEED=4067.37'

RANDY WILLIAMS
OPHEIKENS
(120940020)
12822 SQ.FT.
TU: 25

(RANDY W OPHEIKENS
& WF PAMELA K
120940037
16,621 SQ FT TU: 25



N0°58'48"E 2655.85'

S89°21'0"E 2642.05'

SEE PAGE 96

N 72°45'00" W 795.00'